



USER INSTRUCTIONS

Introduction

The FastClip™ is designed for use as a part of a personal fall protection system. Particularly transfer between a marine vessel and structure.

Use

The connector should be only be loaded along its major axis and always be used with the gate closed and fully locked. It should be free to move without; external stress, constraint or support.

The connector can be unlocked, opened, closed and locked with one hand. Always check the gate is fully locked before use.

Ensure other devices do not apply leverage against the gate of the connector.

Attach to rings or eyes ensuring they can move freely within the hook. Other anchors may be suitable, provided the hook is free to move and not loaded across the gate, as this will reduce the strength (see following page).

Before each use:

- Check the gate action by releasing it slowly and ensuring it operates correctly - if it does not DO NOT USE
- Check the locking system closes fully - if it does not DO NOT USE

Attachment

Press Lock (1) then open gate (2) gate will click in to primed position

Push the hook over anchor. The gate will snap shut automatically.

Release

Press lock (1) then open gate (2), squeezing the gate release (2) will eject the anchor from the hook, even when under moderate load. It is possible to release at loads of up to 70kg depending on the strength of the user.

Load Indicator (3)

A significant fall has taken place, if the thin section is deformed.

Use for vessel transfer

Attachment


- Open hook
- Pull down fall arrest system
- Place hook into eye of fall arrest system
- Release gate/ensure gate closes

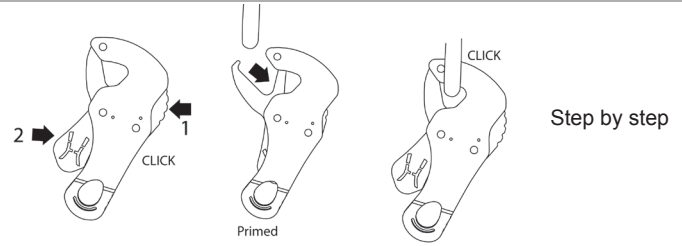
Detachment

- Unlock (press 1)
- Squeeze (2) to release

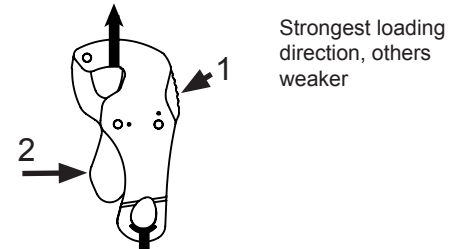
Markings

In addition to the notes on the following page, the connector has the following markings:

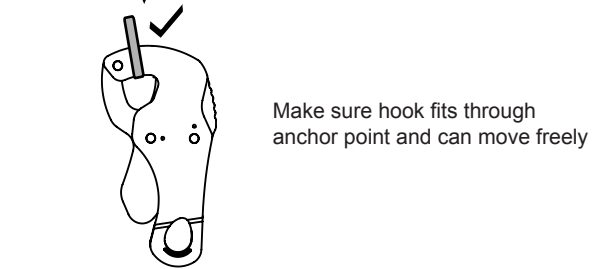
24kN  Strength and direction of loading



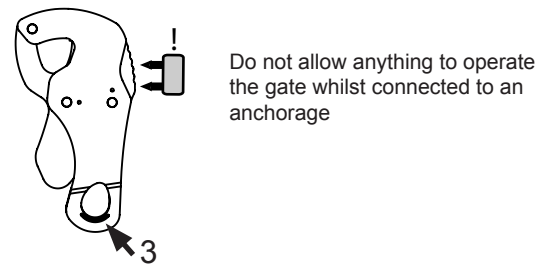
Step by step



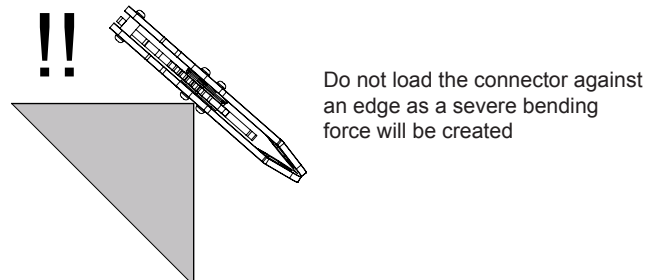
Strongest loading direction, others weaker



Make sure hook fits through anchor point and can move freely



Do not allow anything to operate the gate whilst connected to an anchorage



Do not load the connector against an edge as a severe bending force will be created

The FastClip™ has the following specification:

- Locking: Automatic
- Material: CH14 Stainless Steel
CH141 Stainless Steel/Aluminium
- Opening: 24mm
- Length: 146mm
- Weight: CH14 450g CH141 228g
- Strength:
 - Major Axis (locked): 24kN

Warnings

- Only use when fully closed and fully locked
- Do not load gate
- Do not use if the connector has been used to arrest any fall - only re-use following full examination by competent person
- Ensure other devices are not levering against the gate
- When connecting to a fall arrest system, always allow for the length of the FastClip in the potential fall distance.

